

Devolution options



English Devolution White Paper, Strategic Authorities



Universal coverage of Strategic Authorities

Our goal is simple. Universal coverage in England of Strategic Authorities – which should be a number of councils working together, covering areas that people recognise and work in

Exec summary: However, in order to ensure that citizens across England benefit from devolution, and to ensure the effective running of public services, we will legislate for a ministerial directive. This will allow the creation of those Strategic Authorities where local leaders have, after due time has been allowed, not been able to make progress.

Detail: However, in order to ensure a complete national layer of Strategic Authorities is in place to devolve further powers to in future, we will legislate for a ministerial directive, which will enable the government to create Strategic Authorities in any remaining places where local leaders in that region have not been able to agree how to access devolved powers. Our commitment to working in partnership holds firm, and so the government will limit its use of this power to instances when other routes have been exhausted. We will ensure that the ministerial directive is used to conclude the process where there is majority support, or the formation is essential in completing the roll out of Strategic Authorities in England.

Approach to filling the map

The government will work collaboratively with local government to deliver on the ambition of universal coverage of Strategic Authorities in England.

English Devolution White Paper, powers and co-ordination

The government will put a framework into legislation setting out the powers that go with each type of authority....
The most far-reaching and flexible powers will be for Mayoral Strategic Authorities

Reforming and joining up public services:

- Police and crime Commissioner duties

- Fire and Rescue Authorities

- Integrated Care Partnerships and IC Boards

Plus, alignment of boundaries for these plus probation, job centres and local authorities

Local Government Reorganisation - "where there is evidence of failure or where their size or boundaries may be hindering their ability to deliver sustainable and high-quality public services." **Note - not for BCP Council**

English Devolution White Paper - Key areas for influence and control



1. Transport and local infrastructure
2. Skills and employment support
3. Housing and strategic planning
4. Economic development and regeneration
5. Environment and climate change
6. Health, wellbeing and public service reform
7. Public safety

English Devolution White Paper – comments on scale and geography



When agreeing geographies the government will consider the following principles:

Scale: SA's - the default assumption is for a combined population of 1.5 million or above

Economies: SA's focus on functional economic areas, travel-to-work patterns and local labour markets.

Contiguity: Any proposed geography must be contiguous across its constituent councils

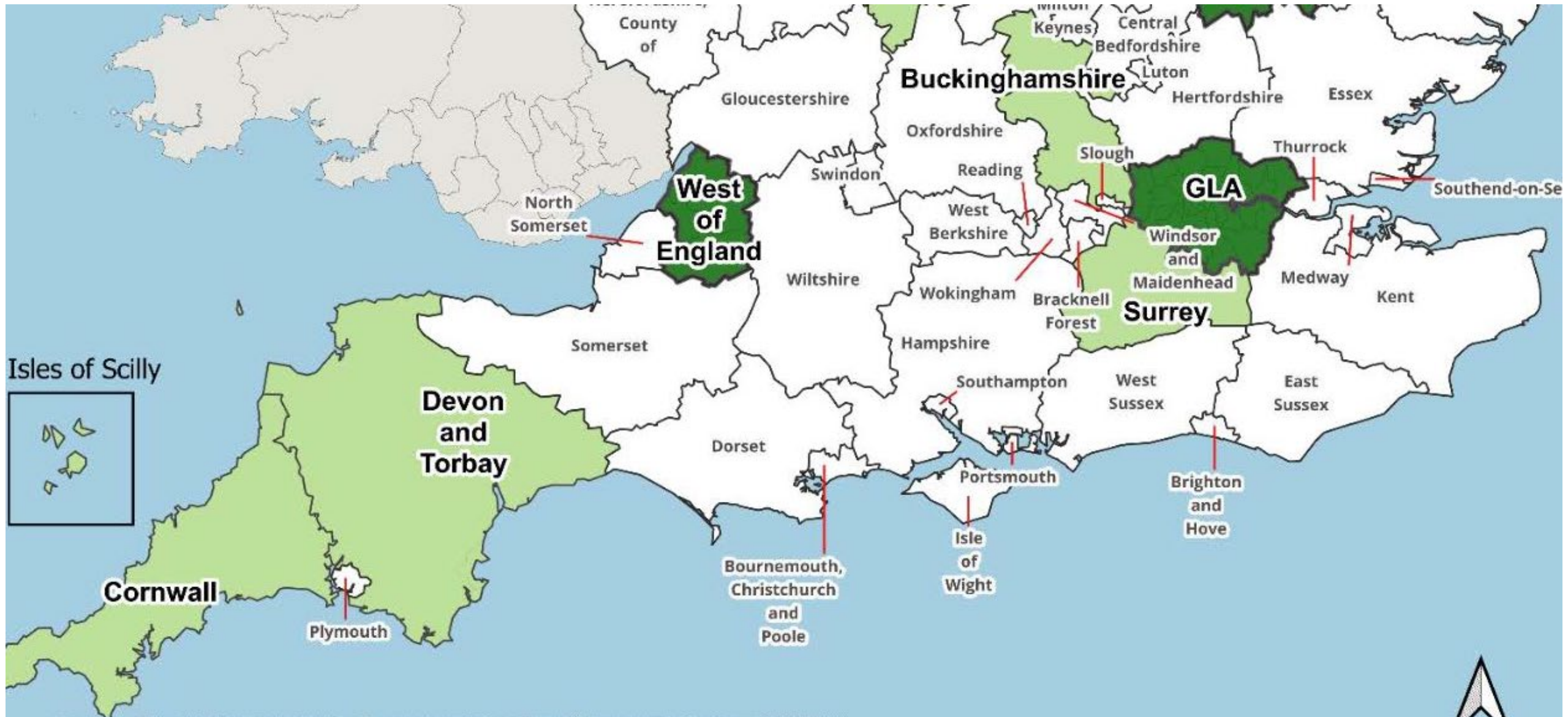
No 'devolution islands': Geographies must not create devolution 'islands'

Delivery: Geographies should ensure the effective delivery of key functions including Spatial Development Strategies, Local Transport Plans and Get Britain Working Plans.

Alignment: Promote alignment between devolution and other public sector boundaries.

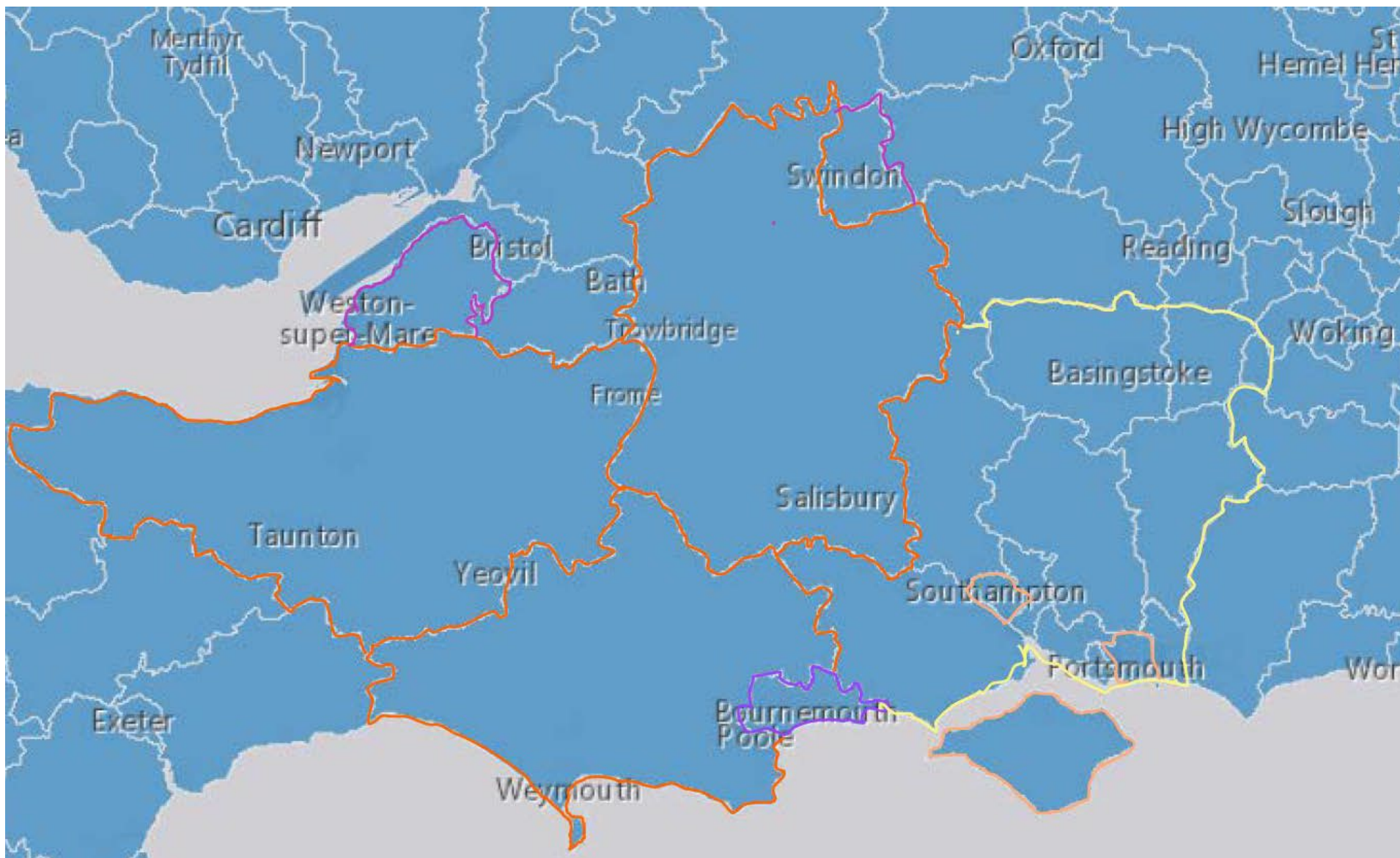
Identity: local identity plays a key role in enabling SA's to be held to account.

Devolution Options – existing framework



Source: Office for National Statistics licensed under the Open Government Licence v.3.0 (2024)

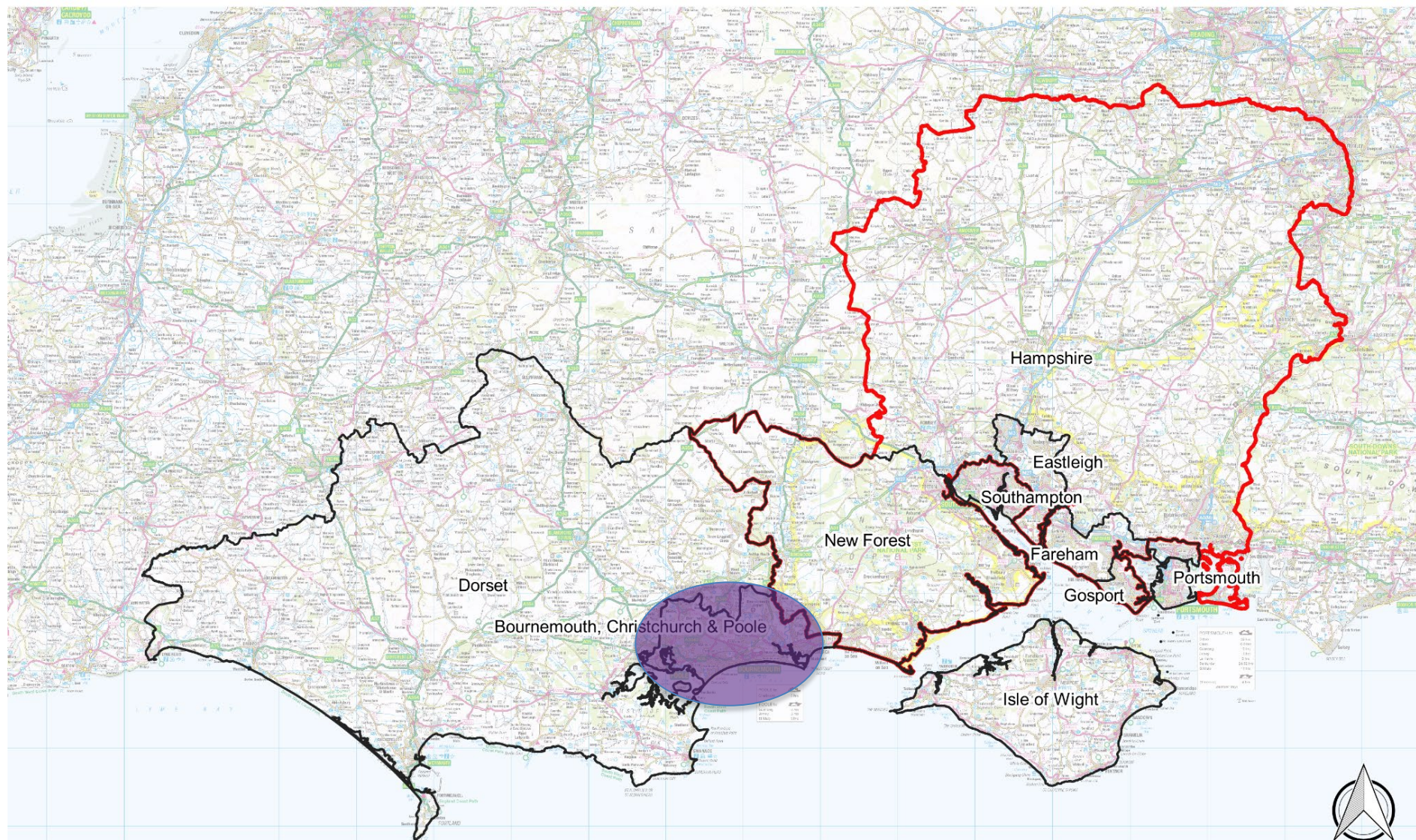
Devolution Options



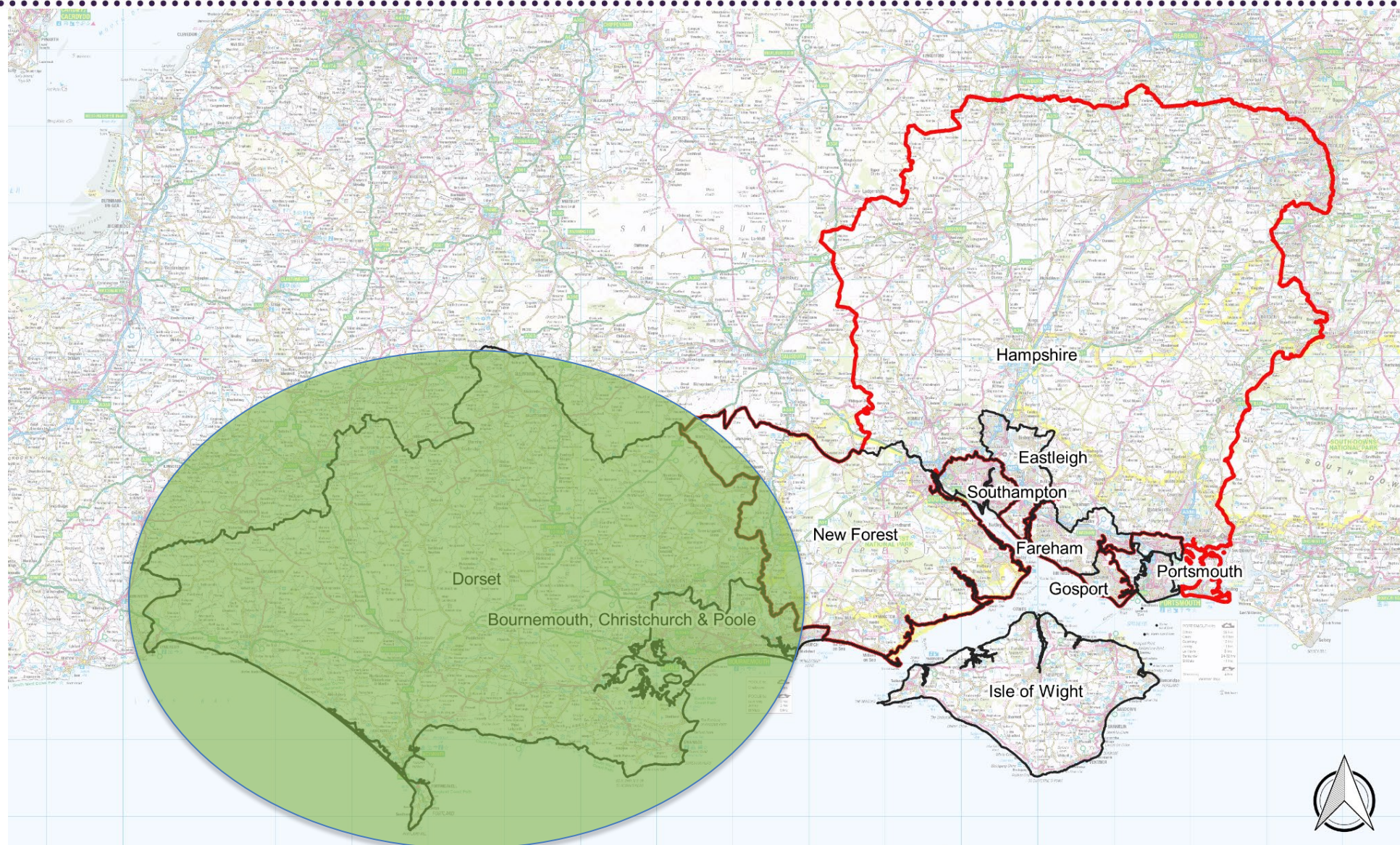
Heart of Wessex:
4-6 UA's

**Hampshire and
Solent:**
3 UA's
10 DC's
1 CC

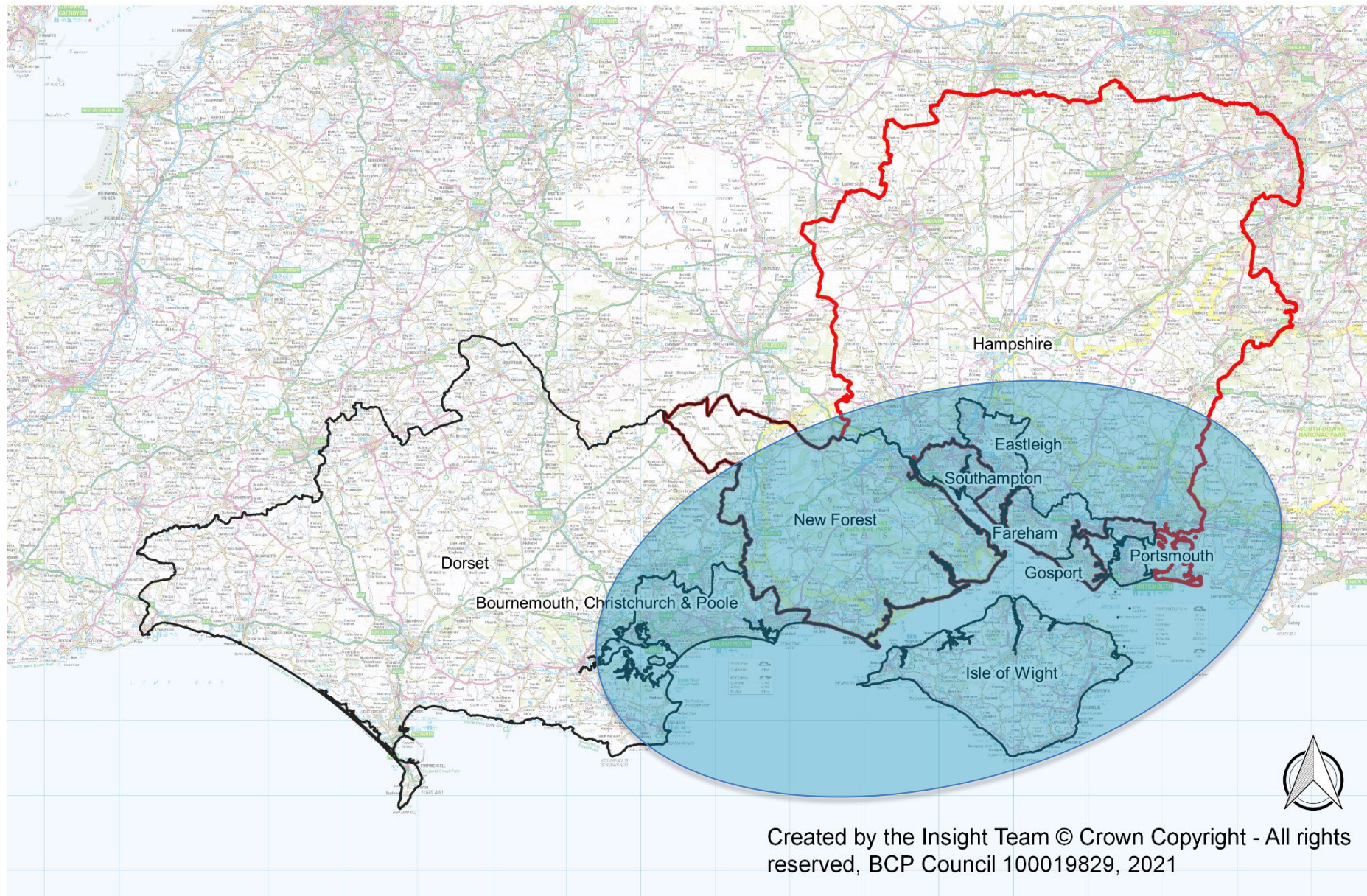
Devolution Options Explored: BCP only



Devolution Options Explored: pan-Dorset county area

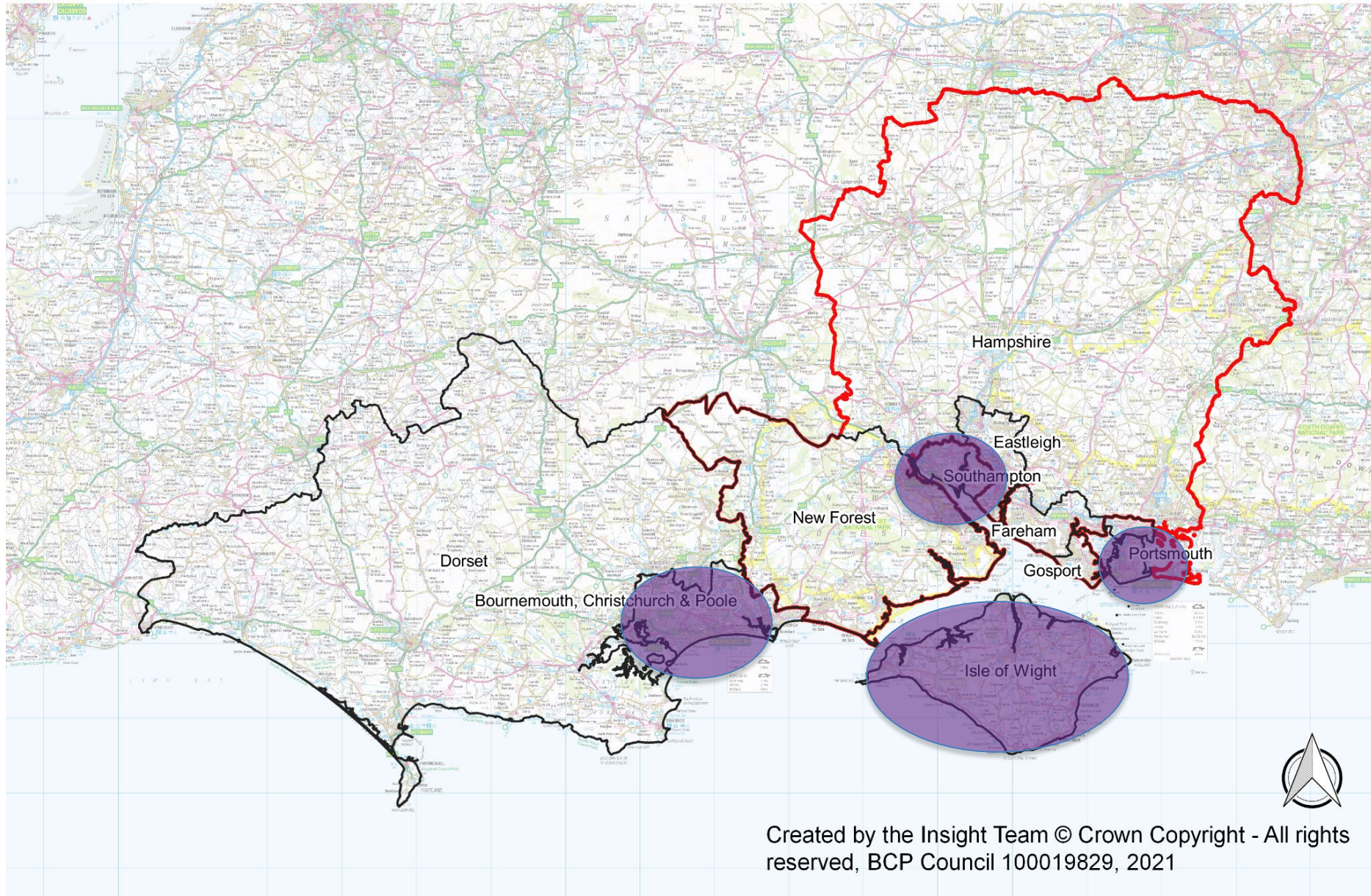


Devolution Options Explored: Central South

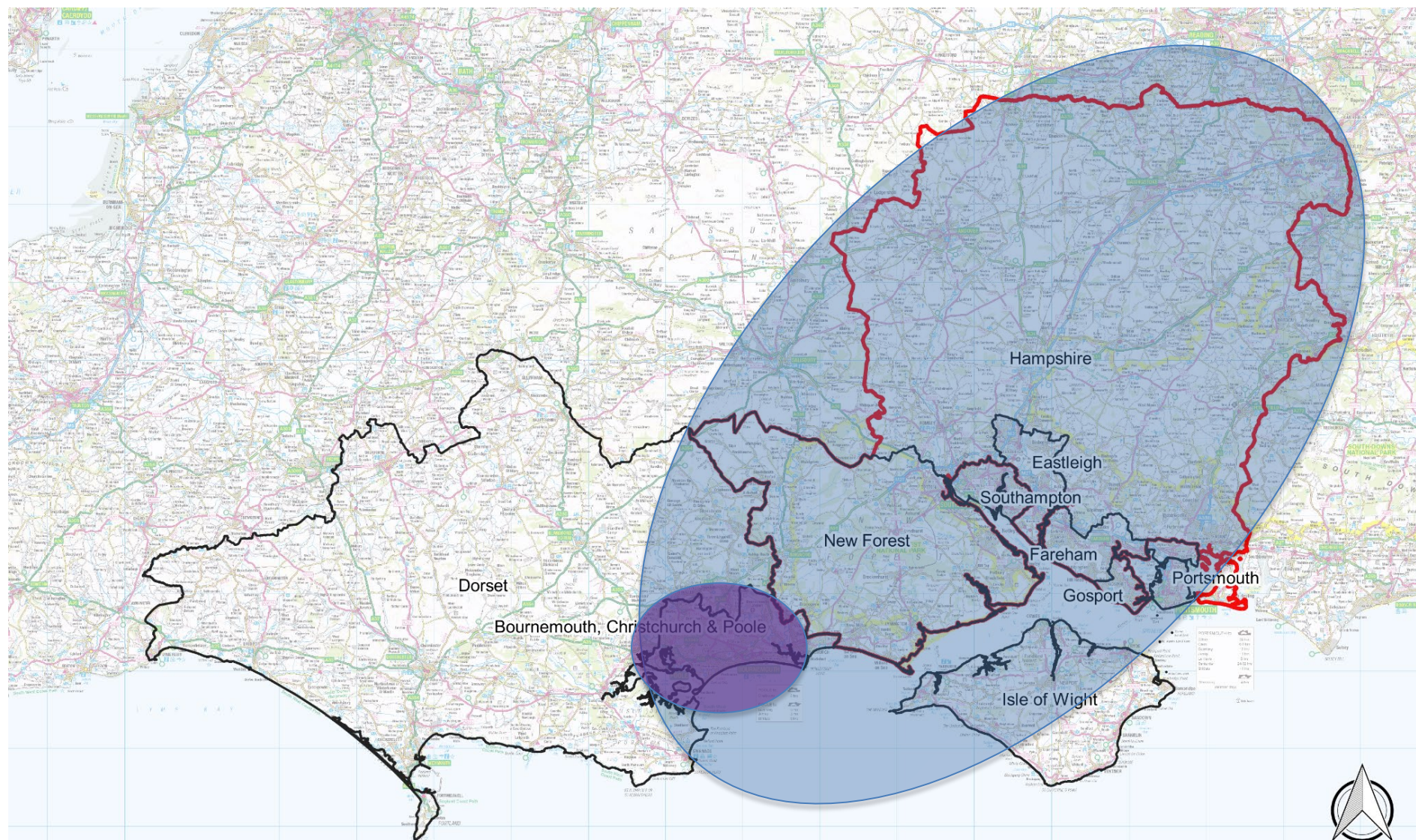


Created by the Insight Team © Crown Copyright - All rights reserved, BCP Council 100019829, 2021

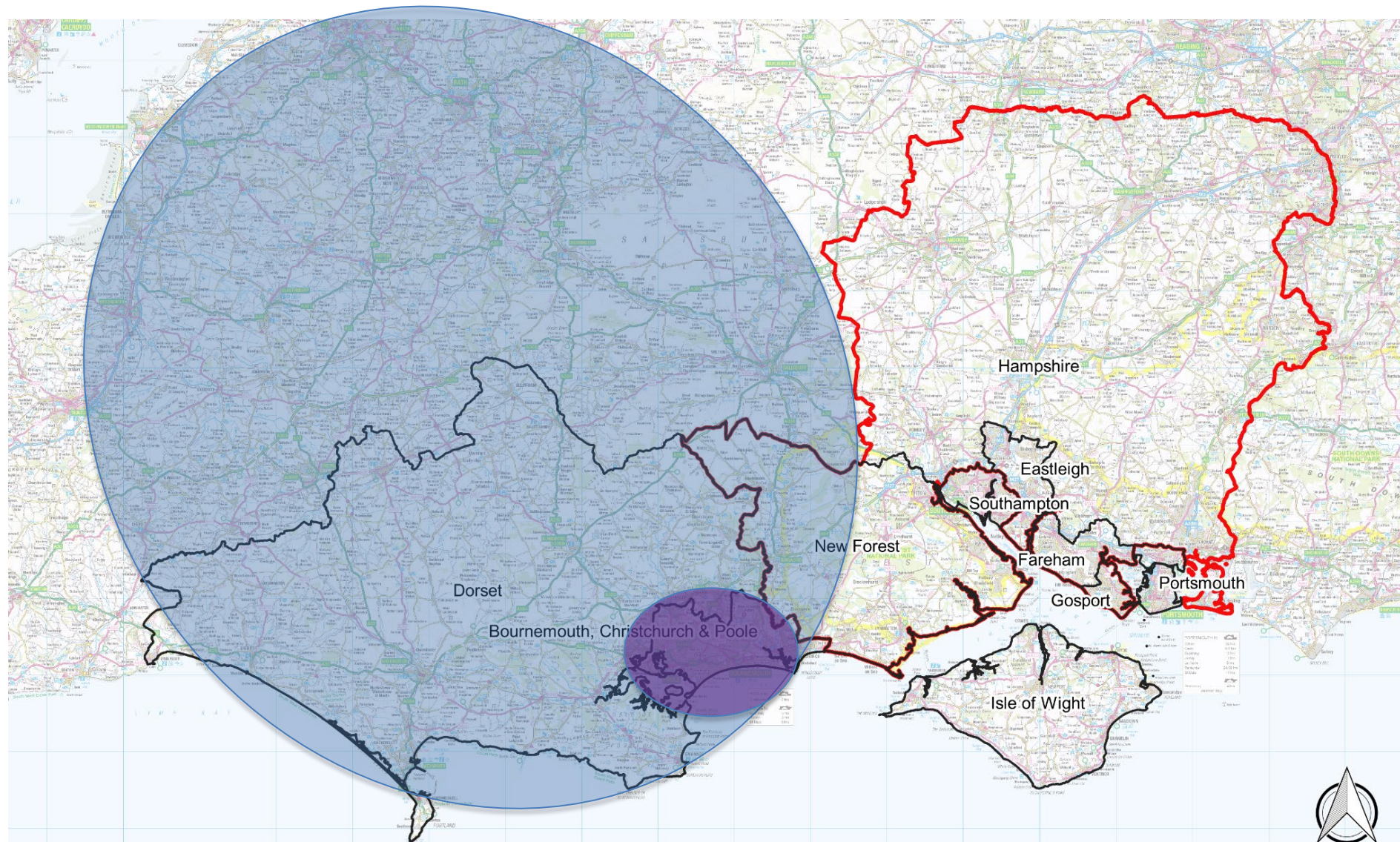
Devolution Options Explored: Solent unitary authorities



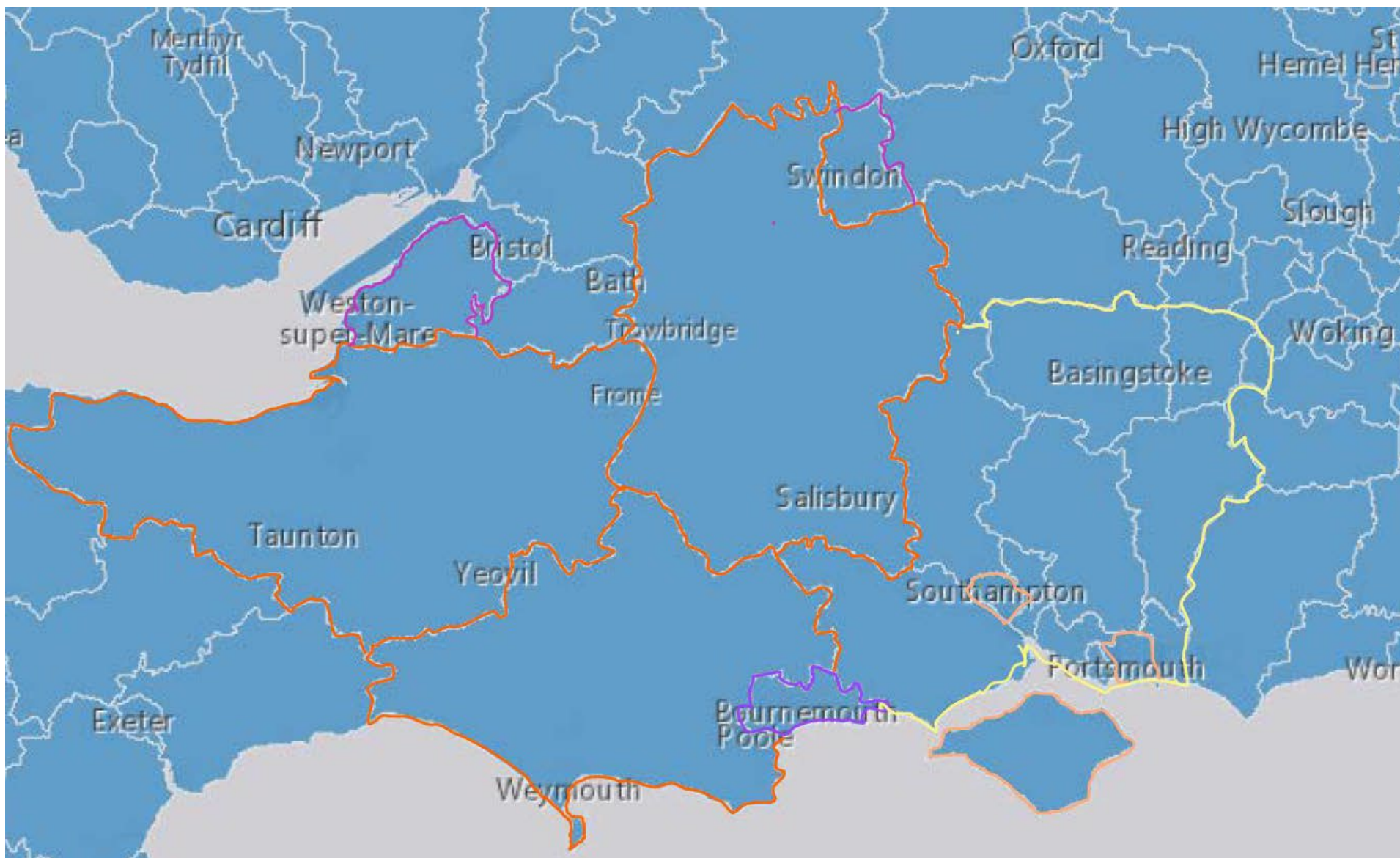
Devolution Options Explored: Pan-Hampshire incl. BCP



Devolution Options Explored: Heart of Wessex



Devolution Options



Heart of Wessex:
3-6 UA's

**Hampshire and
Solent:**
3 UA's
10 DC's
1 CC

Existing regional links

Hampshire and Solent:

- Central South economic area
(led by Southampton University)
- Transport infrastructure
M 27/M3/SW Rail
- FCERM links – Christchurch Bay
- Some planning and mineral links
- Historical (pre-1974 LGR) connections

Heart of Wessex/South West

- Government region – SW (all Depts, agencies)
- LGA – SW region
- Professional groups (CEX's, DCS, DASS, Libraries)
- SW Councils (and Leader's network)
- SW Resilience networks inc. military and LRF
- South Western Ambulance Service
- Health and Public Health – SW region
- Dorset Police and Probation – SW region
- Western Gateway sub-national transport body
- Great SW pan-regional partnership
- Local Enterprise Partnership (pan-Dorset)
- Chamber of Commerce & Industry (pan-Dorset)
- Dorset Heaths Partnership
- Poole Harbour Nutrients Scheme

Devolution options

